

ATCL program

Support for development of a climate plan

April 10, 2025

Infrastructure and Buildings Working Group (IBWG)

Direction du développement des programmes, de l'innovation sociale et des collectivités

Outline of the presentation

- The municipal sector: a key actor in the transition
- Why have a climate plan?
- ATCL program: Accélérer la transition climatique locale (Accelerating the local climate transition)
- Conditions for success

The municipal sector: A key actor in the transition

- All of Quebec's regions are already affected by the impacts of climate change, and their costs will increase significantly in the coming years and decades.

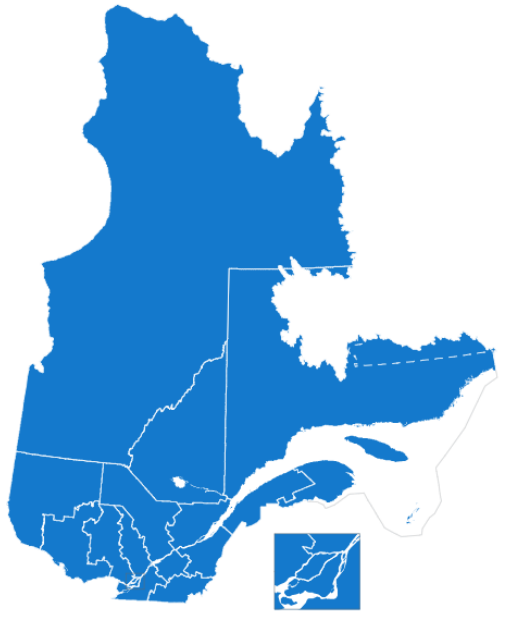


Radio-Canada, 2019

Examples of impacts experienced in Quebec

- Heat waves causing deaths: 500 deaths/year in Quebec
- Heavy rain causing urban flooding and flooding of watercourses
- Reduced ice cover causing shoreline erosion

Ref: [Les aléas affectés par les changements climatiques : effets sur la santé, vulnérabilités et mesures d'adaptation](#)



The municipal sector: A key actor in the transition



- According to the Canadian Institute for Climate Choices (now known as the Canadian Climate Institute), **each dollar** invested in adaptation will lead to long-term savings of **13 to 15 dollars**.



Radio-Canada, 2018

The Quebec municipal sector: A key actor in the transition.....



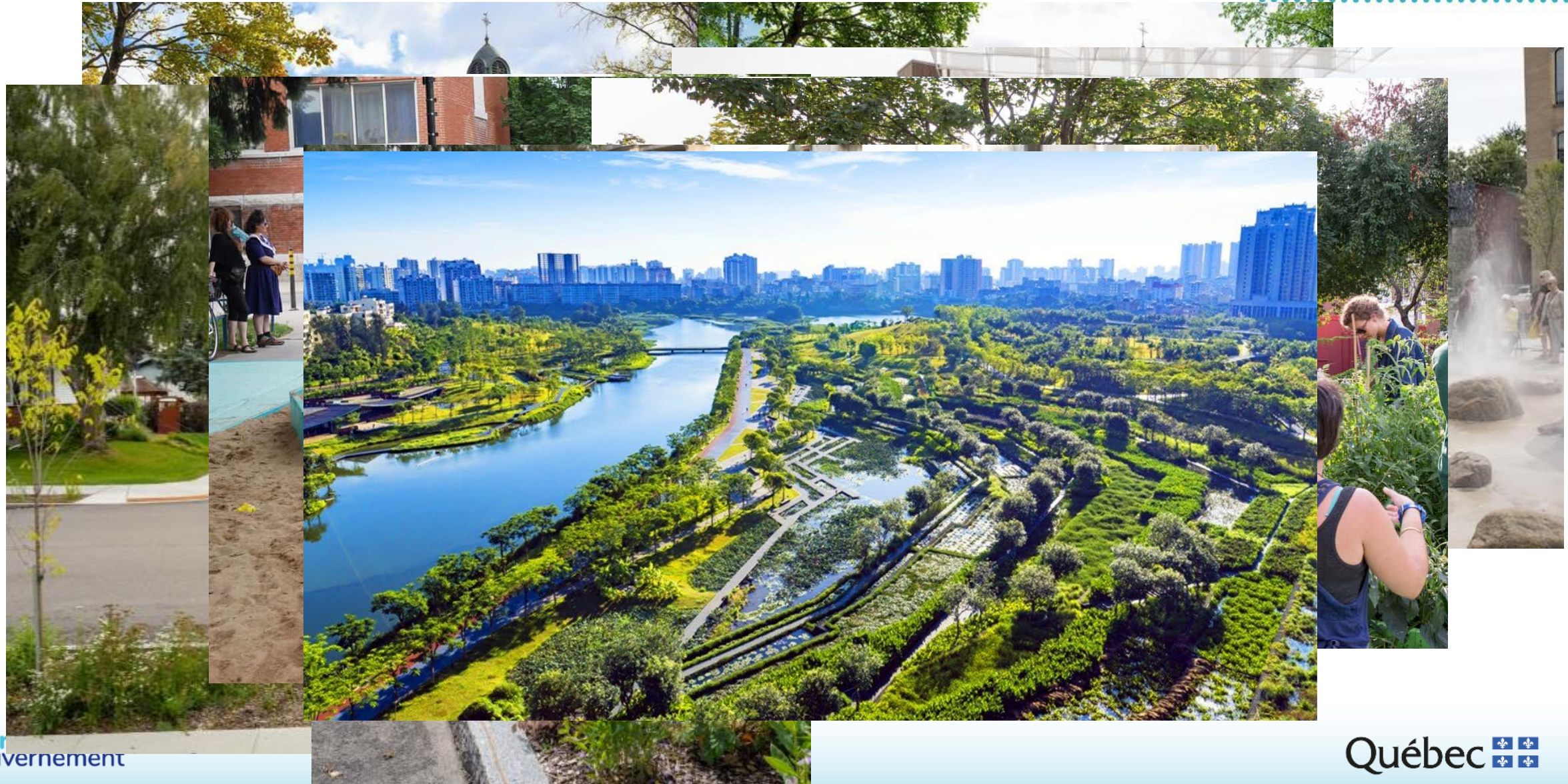
RCM jurisdictions

- land use and community planning
- regional economic development
- watercourse management
- waste management
- public safety (fire and emergency preparedness)
- municipal land valuation

Municipal jurisdictions

- culture, recreation, community life and green space
- local economic development
- safety
- transportation
- nuisances
- sanitation
- power development and community telecommunication systems
- the environment

The municipal sector: A key actor in the transition



ATCL – What is a climate plan?

8

A document presenting an action plan for combatting climate change, over a defined time horizon, prioritized following an **adaptation process** (risk assessment and treatment), a **greenhouse gas emissions inventory** and an assessment of the potential reduction in emissions.

Statement of adaptation goals and a GHG emission-reduction target for the period in question.



Why prepare a climate plan?

- To preserve and even IMPROVE citizens' quality of life.
- Taking into consideration that climate change affects EVERYONE.
- To plan and BUDGET FOR the project over a time horizon
- and avoid COSTS associated with inaction (prevent rather than repair).
- To support DECISION MAKING and better PRIORITIZE the actions.



GREEN ECONOMY PLAN (PEV 2030)

- First umbrella policy on climate change
- Road map for the government

IMPLEMENTATION PLAN (IP)

- Concrete actions, targets, reduction of GHGs and budgets
- Revised annually
- Results-based monitoring



- Accelerate the local climate transition



ACCELERATING THE LOCAL CLIMATE TRANSITION (ATCL)



ATCL – Eligible organizations

- RCMs
- Municipalities and agglomerations exercising certain RCM jurisdictions
- Kativik regional government
- James Bay regional government



ATCL – Financial support

Stream 1 - Support for preparation of climate plans by the municipal sector (MELCCFP)

- \$127.5 million delivered in March 2024 to 101 municipal agencies.
- The 101 municipal agencies must prepare their climate plan by March 31, 2027.

• Stream 2 - Support for planning and implementation of actions identified in the climate plans (MAMH)

- \$397 million over 5 years – Implementation Plan 4 (PMO4).



ATCL – Provincial coverage

- With the 101 climate plans:

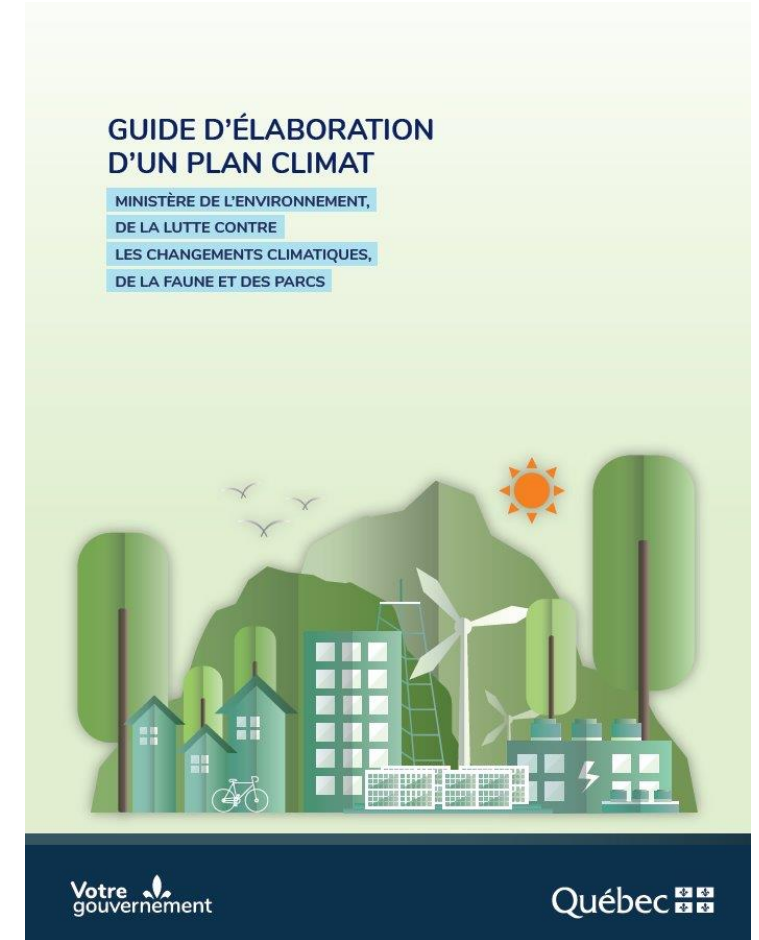
All of Quebec will be covered by a climate plan!



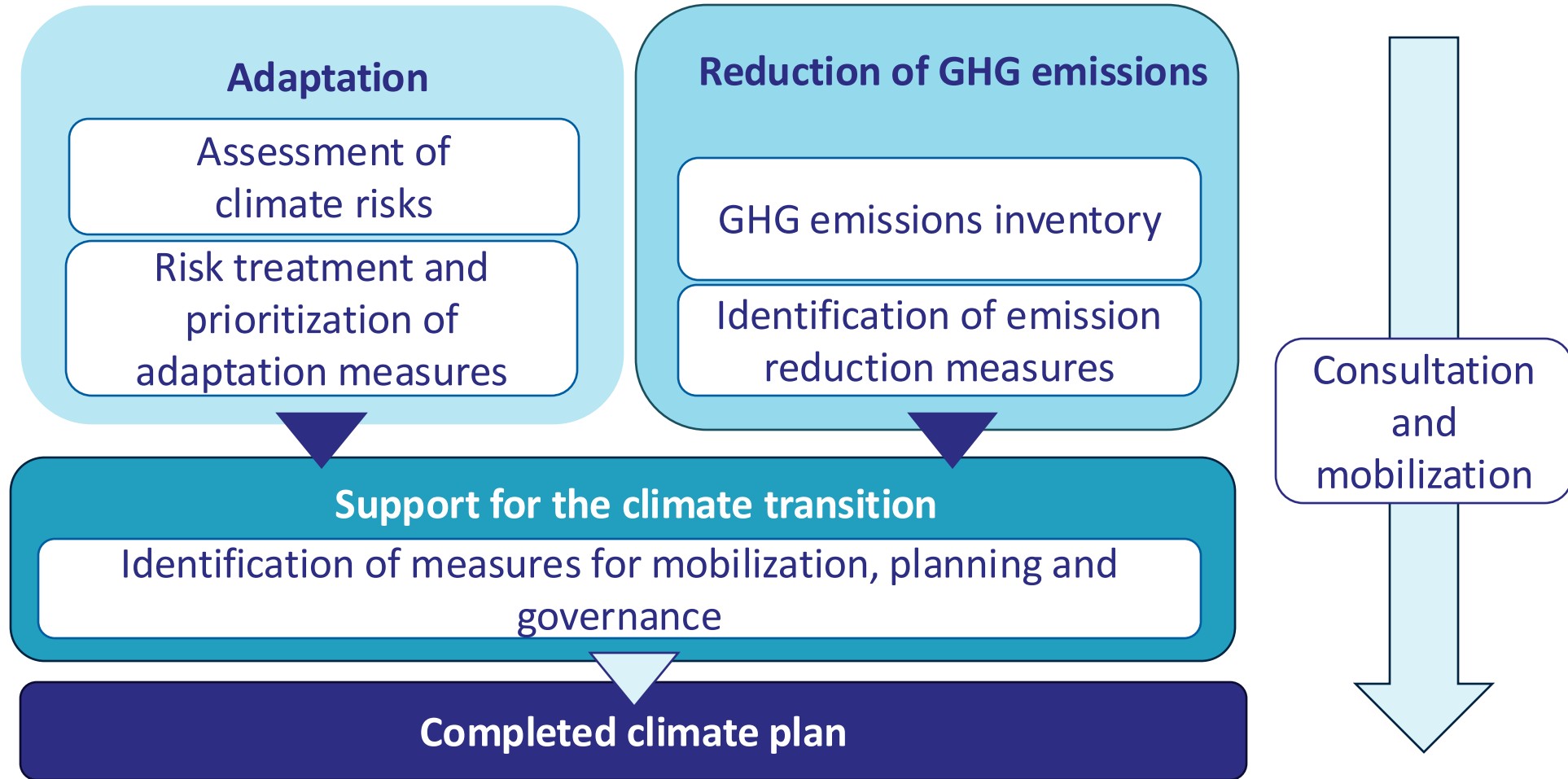
ATCL – Guide to developing a climate plan

Stream 1: Support for preparation of climate plans

- A guide providing parameters and methodologies:
 - GHG inventory – (Methodology guide)
 - Potential GHG reduction for the projects
 - Prioritization of projects
 - Risk assessment – (Ouranos guide)
 - Prioritization of adaptation projects
 - Consultations with the community
 - Consolidation of the climate plan



ATCL – Process for developing the climate plan



Stream 2: Development and implementation of climate plans

- Same municipal agencies that are eligible for Stream 1
- The projects must be linked to the actions set out in the climate plan approved by the MELCCFP and fit into one of the three project categories:
 - 1 – Climate change adaptation.
 - 2 – Climate change mitigation.
 - 3 – Support for the climate solutions.
- Fast track for the municipalities that already have a plan!



ATCL - Conditions for success of the climate plan

- Driven by the municipal agency
- Compatible with other relevant plans
- Commitment of municipal actors
- Availability of financial, human and material resources



©Solon

ATCL - Conditions for success of the climate plan (continued)

- Hire the personnel or consultants required for the project.
- Share best practices with other RCMs or with the UMQ (Union of Quebec Municipalities) and the FQM (Federation of Quebec Municipalities).
- Retrieval of public health data.
- Program discipline.



©Solon

ATCL – The challenges



- Requires sustained effort over a few years.
- Maintain the priority of the climate plan, despite the day-to-day realities (cost of living, unstable political situation, etc.).
- Ensure consistency with the OGAT and the LUPDP, the regional disaster resiliency plan, etc.
- Mobilization of elected representatives, municipal employees and the population.

Useful links



For more information

Website: [Accélérer la transition climatique locale | Gouvernement du Québec \(quebec.ca\)](https://www.quebec.ca/transition-climatique)

Contact us

- ❖ **Stream 1:** Support for the development of climate plans: planclimat@environnement.gouv.qc.ca
- ❖ **Stream 2:** Support for implementation of projects stemming from climate plans: projetsclimat@mamh.gouv.qc.ca

THANK YOU

