



Housing, Infrastructure
and Communities Canada

Logement, Infrastructures
et Collectivités Canada

Climate Toolkit for Housing and Infrastructure

Presentation to the Infrastructure and
Buildings Working Group

December 10, 2024

What's the challenge?

Communities across Canada urgently need to increase their resilience to climate hazards and mitigate emissions. Yet, many communities face a series of barriers to doing so, such as:



Appropriate resources are difficult to find



Geospatial data is not accessible or hard to



use
Regionally-specific expertise is limited



Specialized technical expertise is too costly



Staff are oversubscribed



Climate Toolkit for Housing and Infrastructure

Providing Canadian communities with the resources and expertise needed to address climate change and build low-carbon, resilient housing and infrastructure.

Learn more about our services:



Who is it for?

Infrastructure professionals
and decision-makers from Canadian
communities

Services



Help Desk

Contact a dedicated service line within HICC for assistance with integrating climate change into their project.

Visit: <https://support-infrc.canada.ca/>



Online Platform

Evaluate infrastructure options, and access trusted tools, to implement climate-informed projects.

Visit: <https://climateinsight.ca>



Roster of Experts

Get matched with climate and infrastructure experts for personalized climate-informed projects options.

Visit: <https://climatereadycanada.ca/>

Feedback & performance measurement

Engagement and outreach

Target Audiences for Climate Toolkit



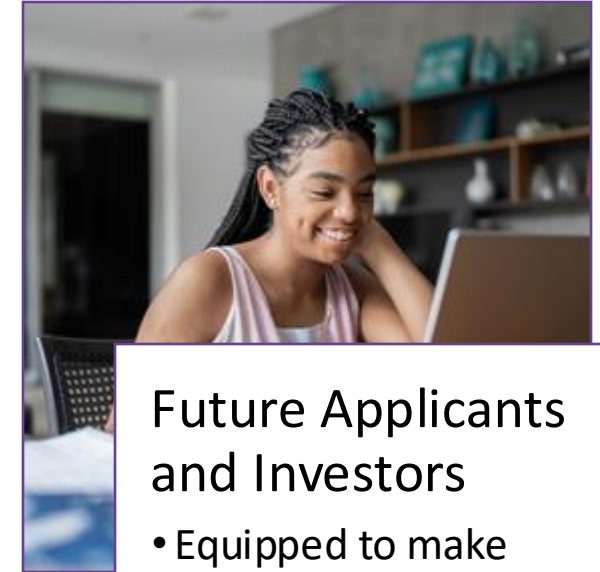
Professionals and Decision Makers

- Climate and non-climate literate
- Professionals include: engineers, planners, asset managers, sustainability coordinators, architects, landscape architects, and financial officers



Priority Communities

- Rural, northern, remote communities
- Communities at greater risk to climate change impacts
- Indigenous communities
- Smaller populations



Future Applicants and Investors

- Equipped to make climate informed project investments
- Informed local investments
- Informed HICC project applications

Supporting Low-Carbon Resilient Infrastructure

Low-carbon resilience:

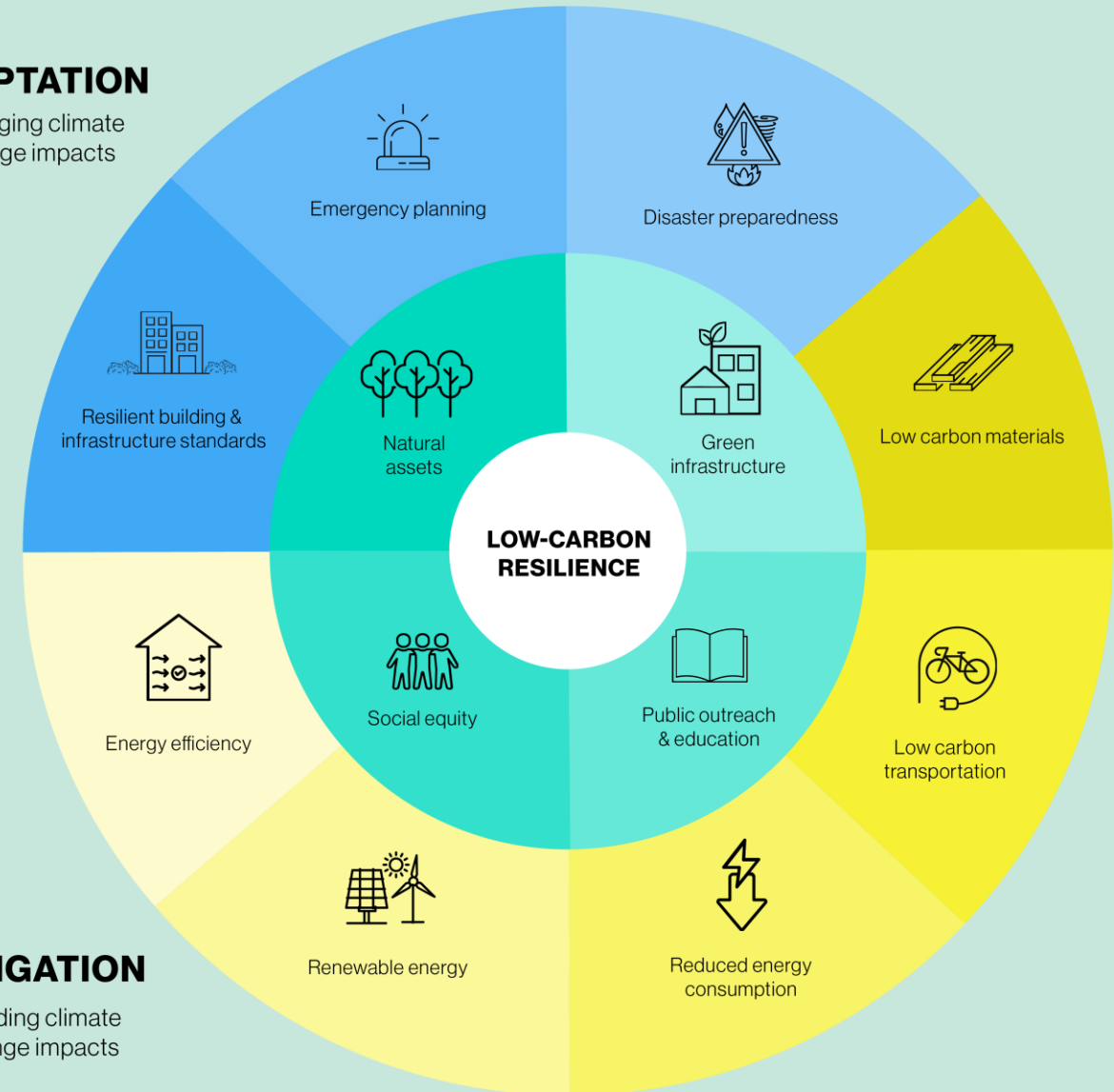
1. Brings together mitigation and adaptation strategies in planning, policy and implementation processes.
2. Promotes multiple co-benefits for public health, equity, biodiversity and quality of life.

National Adaptation Strategy: As of 2024, resilience to climate change impacts factored into all new federal infrastructure funding programs.

Net-Zero Emissions Accountability Act: Reduce emissions by 40%-45% against 2005 levels by 2030. Achieve net zero emissions by 2050.

ADAPTATION

Managing climate change impacts

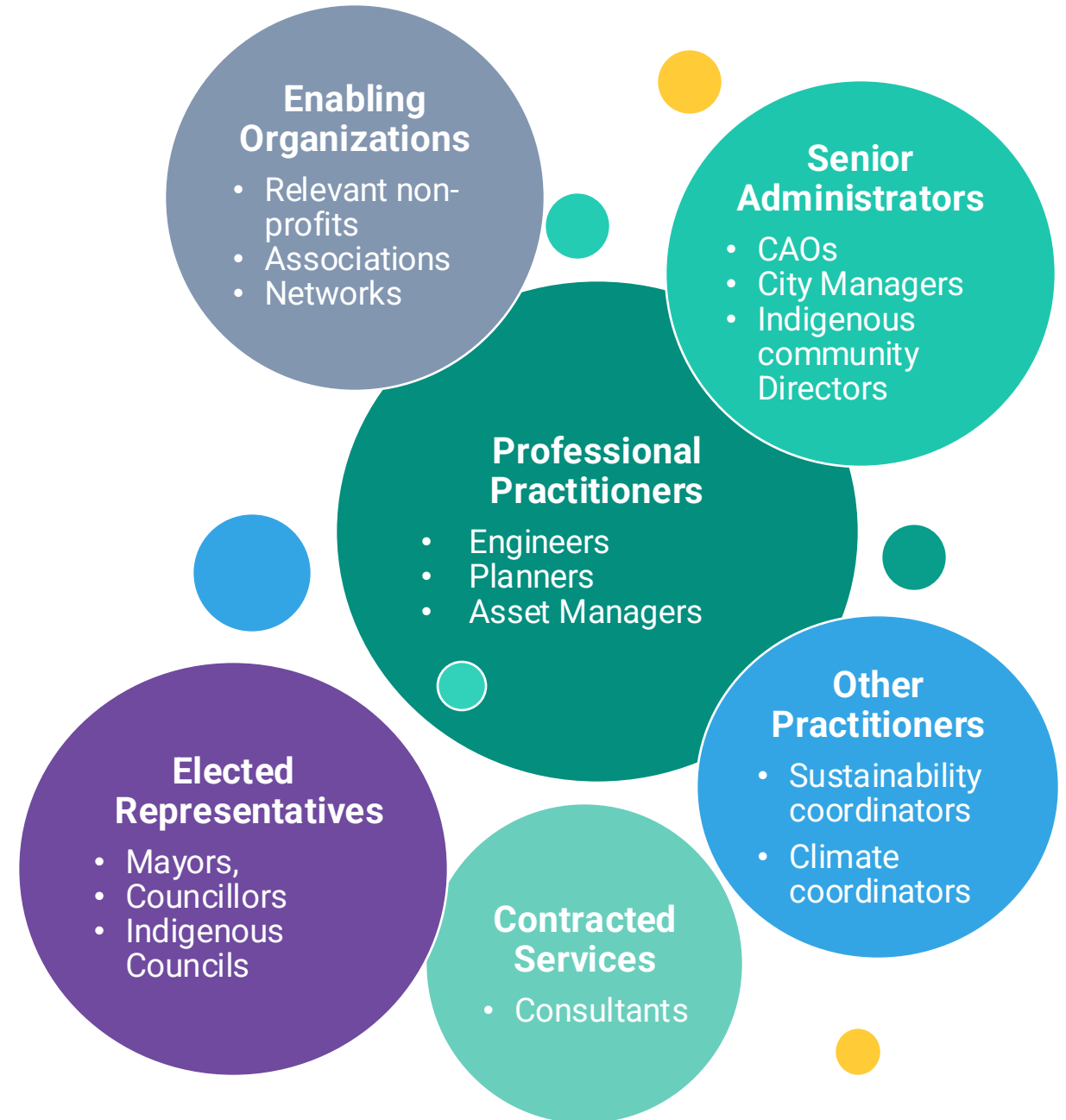


MITIGATION

Avoiding climate change impacts

Audience Ecosystem

- Services are open to all communities.
- Direct audiences:
 - Professional practitioners
 - Senior administrators
 - Contracted services
- Influencers and access points:
 - Enabling organizations
 - Elected representatives



Supported Infrastructure Assets

Supporting 4 types of public infrastructure while integrating nature-based solutions:

- buildings & housing development
- water, wastewater & stormwater
- public transit and transportation
- solid waste



Three ways to
submit an inquiry:



Webform

[https://support-
infc.canada.ca/](https://support-infc.canada.ca/)



Phone

1-833-834-0243



Email

[Climate-Infra-
Climat@infc.gc.ca](mailto:Climate-Infra-Climat@infc.gc.ca)

Climate Help Desk

A dedicated service where communities can submit inquiries and receive direct support and guidance on infrastructure and climate-related needs.

It offers a broad range of services, including:



Information on **sector best practices** for incorporating low-carbon and climate resilience measures in infrastructure and housing projects.



Advice on using **specialized tools and resources** to integrate low-carbon and climate resilience into projects and relevant risk assessment tools.



Comprehensive responses to **questions about climate requirements** for HICC's funding programs.

Roster of Climate and Infrastructure Experts – climateredycanada.ca

Tailored, regionally-informed expertise on opportunities for low-carbon, climate-resilient infrastructure projects.



Connect with qualified experts

Get connected with pre-vetted, qualified climate and infrastructure experts.



Options analyses

Gain tailored, expert support to assess climate-informed options for an infrastructure project.



Better infrastructure projects

More projects that integrate climate considerations are built, better serving Canadians.

Roster Features



No cost to participate: Access to experts is provided as a free service to local governments.



Flexible engagement: Experts can commit to varying levels of involvement based on project needs.



Focus on capacity building: CRIS supports local governments in developing the knowledge and skills needed for advancing climate-informed infrastructure projects.



Support for diverse projects: Infrastructure projects in the planning and design stage that are looking to enhance climate mitigation, adaptation, or minimize environmental impacts are welcome.



Commitment to Indigenous communities: Indigenous Governing Body or authorities are eligible to apply.



Climate Toolkit Platform - ClimateInsight.ca

An online, open-access platform that empowers communities with the data and information they need to build low-carbon and climate-resilient infrastructure.



Explore data and maps

- Hazard maps
- Infrastructure data
- Social equity data



Guided navigation

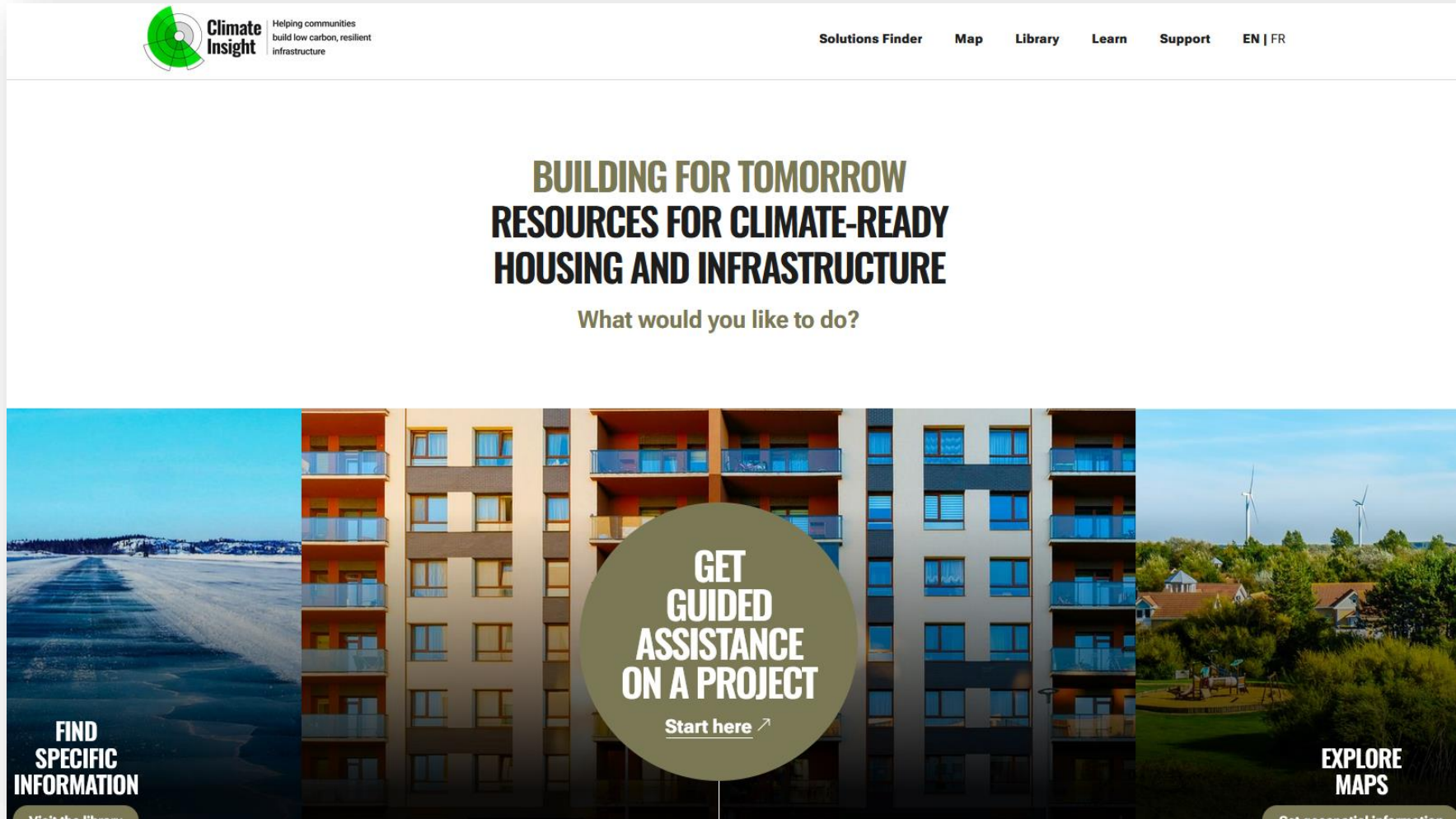
- Options recommendations
- Tailored resource suggestions



Find specific tools

- Rapid Risk Assessment
- Emissions baseline calculator
- Resource Library

Climateinsight.ca Demonstration - Buildings



The screenshot displays the Climate Insight website interface. At the top left is the Climate Insight logo, which includes a green circular icon and the text "Climate Insight" followed by the tagline "Helping communities build low carbon, resilient infrastructure". To the right of the logo is a navigation menu with links for "Solutions Finder", "Map", "Library", "Learn", "Support", and "EN | FR". The main content area features a large heading "BUILDING FOR TOMORROW" in a bold, dark font, followed by "RESOURCES FOR CLIMATE-READY HOUSING AND INFRASTRUCTURE" in a slightly smaller bold font. Below this heading is the question "What would you like to do?". The bottom section of the page is a collage of three images: a wide, straight road stretching into the distance under a clear blue sky; a modern multi-story apartment building with balconies; and a suburban neighborhood with houses and green trees. Overlaid on the center of this collage is a large, semi-transparent olive-green circle containing the text "GET GUIDED ASSISTANCE ON A PROJECT" in white, with a link "Start here" and an arrow icon below it. In the bottom left corner, there is a button labeled "FIND SPECIFIC INFORMATION" with a sub-link "Visit the library". In the bottom right corner, there is a button labeled "EXPLORE MAPS" with a sub-link "Get essential information".

Climate Insight Helping communities build low carbon, resilient infrastructure

Solutions Finder Map Library Learn Support EN | FR

BUILDING FOR TOMORROW

RESOURCES FOR CLIMATE-READY HOUSING AND INFRASTRUCTURE

What would you like to do?

GET GUIDED ASSISTANCE ON A PROJECT
[Start here](#) ↗

FIND SPECIFIC INFORMATION
[Visit the library](#)

EXPLORE MAPS
[Get essential information](#)

Scenario

Community: rural municipality in New Brunswick, population ~2K

Issue: municipality's main street faces the ocean and is threatened by coastal erosion. Facing lack of funds while recognizing the need for more proactive climate action.

Help Desk



Receive guidance on questions like...

- What are the trade-offs and potential co-benefits of traditional grey infrastructure and nature-based solutions?
- Can you help me understand the climate requirements of the Disaster Mitigation and Adaptation Fund?
- Can I connect with provincial support services?

ClimateInsight.c

Find answers to...

- What solutions or case studies exist for similar coastal communities?
- What nature-based solutions exists for coastal erosion in New Brunswick?
- What are the latest standards and best practices for small coastal communities responding to erosion?



Roster of Experts



Work with experts to analyze options using tools like cost-benefit analysis, for:

- Building rock groynes or erosion control blankets
- Relocating the main street behind the buildings
- Beach nourishment and salt marsh restoration

Discussion Questions

- What other adaptation related **tools or services** is the **IBWG** promoting that help practitioners/ communities plan low-carbon and/or climate resilient infrastructure?
- How can CTHI **leverage the work of the IBWG** in facilitating adaptation to climate change?
- What are key **sector gaps or trends** that should inform CTHI services?
- What **infrastructure and buildings related organizations or networks** should CTHI engage with to inform these services?





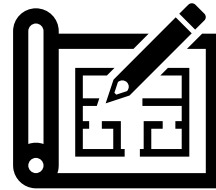
Work with us



We want to hear from you



Let's foster connections



Help us refine our services